

Baxter

ACCELLA SMART BED

Improve Patient Safety. Enhance Outcomes.
Optimize Workflow.



CHALLENGES IN TODAY'S HEALTHCARE

In the complex healthcare environment, hospitals face challenges ranging from patient safety to staff efficiency and constraints.

1 out of 6

Patients developed complications after elective surgery.¹



The Accella Smart bed was designed specifically to solve these challenges across mid-to-high acuity care settings to help:

- Improve Patient Safety
- Enhance Outcomes
- Optimize Workflow







DESIGNED FOR PATIENTS AND CAREGIVERS

Versatile and innovative, the **Accella Smart bed** offers flexible solutions across a range of mid-to-high acuity care settings and provides a future-proof design for future advancements.



IMPROVE PATIENT SAFETY

- 3-mode bed exit alert
 - Intelligent nightlight
 - Steam clean validated
-



ENHANCE OUTCOMES

- Patient Migration Management with **SlideGuard** Technology
 - Advanced Microclimate Management Technology
 - Immersion Pressure Redistribution
-



OPTIMIZE WORKFLOW

- Simple Weigh in-bed Scale
- Graphical Caregiver Interface
- Auto CPR/Lever
- Wireless Smart Connectivity

TAKE PATIENT SAFETY TO THE NEXT LEVEL

UP TO

11.5

Falls per 1,000 bed days in general wards.²

\$30,696

Additional cost per patient experiencing serious injurious fall.³

MORE THAN

3.5

MILLION

Cases of HAL are estimated to occur in the European Union and European Economic Area (EU/EEA) each year

Ensuring the very best in patient safety lies at the heart of **the Accella Smart bed**. With vital input from our customers, we address key risks such as falls and hospital associated infections.

ADDRESS THE RISK OF HAIS

Simplified cleaning and disinfection

- Smooth surfaces and removable panels facilitate chemical or steam cleaning and decontamination

Enhanced design for improved hygiene

- Linen holder
- Simple surface to frame integration
- Longer zip flap to protect surfaces from fluid ingress





ENSURE YOUR FALL RISK PATIENTS ARE SAFE



① 3-mode bed exit alert

- Alert caregivers to potential bed exit events
- Set appropriate mode of sensitivity based on the acuity level of your patient
- Optional ability to alert caregiver at nurse station via a nurse call system

② Intelligent night light

- Promote visibility for patients at night
- Notify caregivers to potential bed-exit or bed-height risks
- Shines green when the bed is in its lowest position
- Shines orange alerting for potential height adjustment or bed exit

③ Brake-off Indicator

- Alert caregivers if the brakes are not engaged via an audible tone that continues until one of the brake pedals is depressed

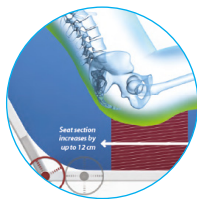
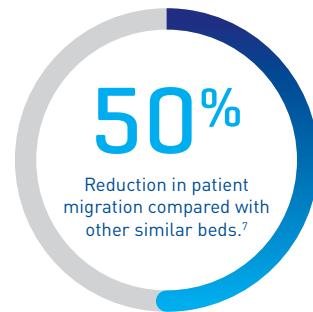
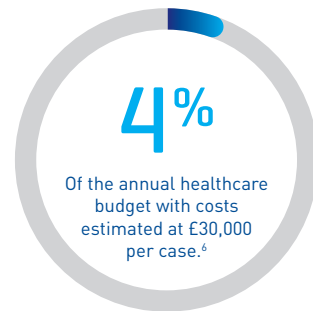
REDUCE THE PREVALENCE OF PRESSURE INJURIES AND ENHANCE OUTCOMES

An Australian study reported the costs of pressure injuries to acute hospitals to be \$USD1.64 billion annually.



\$USD1.64 billion

IN THE UK, PRESSURE INJURIES CONSUME UP TO



Reduce compression, friction and shear that can influence skin breakdown.



In partnership with NPIAP, we develop standardized testing of surface performance to bring you innovative support surfaces that help manage pressure, shear and moisture to deliver optimal wound prevention and healing.



POWERED AIR SURFACE

BI-MODE: CONSTANT LOW PRESSURE (CLP) AND ALTERNATING LOW PRESSURE (ALP)

ADVANCED MICROCLIMATE MANAGEMENT TECHNOLOGY



Skin Protection

Manage moisture issues with the touch of a button



Immersion Therapy

High Level of Pressure Redistribution



X-Ray Cassete Sleeve

Integrated X-Ray Cassete Sleeve (also available as a frame accessory) minimise patient transfer disruption and the need for repeat imaging

NON-POWERED AIR SURFACE

MINIMIZE SHEAR AND FRICTION ON PATIENT'S SKIN

TARGETED PRESSURE REDISTRIBUTION

OPTIMIZE WORKFLOW AND MAXIMISE DIRECT PATIENT CARE

Busy caregivers must accomplish a multitude of tasks in a minimum amount of time. Due to resource constraints, caregivers increasingly encounter time and personnel challenges in the face of treating a patient population that is becoming increasingly more acute and sicker.

The Accella Smart bed optimizes workflow freeing up valuable time to care for patients across mid-to-high acuity care settings.

Simple weigh/ BMI in-bed scale

- Allow caregivers to measure a patient's weight and calculate BMI instantly without having to adjust accessories on the hanging space shown

CPR lever

- Rapidly flatten the backrest of the bed, freeing the caregiver to commence CPR within 5 seconds, while the bed continues to automatically move into a horizontal position
- Electric CPR function is also available

Automated charting to Electronic Medical Records

- Available bed connectivity to Electronic Medical Records (EMR) improves data integrity while reducing the amount of charting required

REPORTED SHORTAGE OF
REGISTERED NURSES⁸

UP TO

71%

MANY MED-SURG NURSES
MANAGE

5-13

Patients at a time.⁹

NURSES SCORE HIGH

UP TO

78%

Regard themselves as burn-out.¹⁰

PATIENTS ADMITTED

50%

That do not have their weight measured.¹¹



1 Graphical Caregiver Interface (GCI)

Simplify workflow with a bright and easy-to-use interactive touch screen to:

- Control head-of-bed and bed-exit alerts
- Offers access to simple weigh, helping caregivers to weigh patients via a series of easy-to-follow prompts
- See head-of-bed angle and horizontal profile of the bed

2 Head-Of-Bed (HOB) angle alert

- Assist caregiver in protocol compliance
- Alert caregivers when the head-of-bed angle drops below 30° or 45°

3 One-touch side egress

- Allow caregivers to egress in an optimal sequence by simply pressing one button
- Levels the bed into a horizontal position
- Position the backrest such that the integrated care-grip handle is in the optimal ergonomic position for egress
- Lower the bed until an ideal height is reached for the patient to egress

FREE CARE TEAMS SO THEY CAN FOCUS ON THEIR PATIENTS

The demand for healthcare is growing and becoming more complex, while nursing shortages intensify. Fewer nurses means more responsibility and less time at the bedside—putting patients at risk.

How can hospitals improve patient outcomes?

It all starts with the patient. That's why it's time to consider the hospital bed as a critical connected device that plays an important role in improving patient outcomes.

CHALLENGES



OPEN. INTEROPERABLE. SECURE

NURSE CALL
AND SMARTPHONES

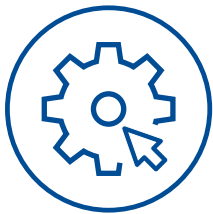


Get back to the bedside and keep patients safe by connecting smart beds, hospital systems and smart applications.

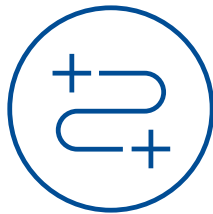


THE POWER OF ONE PLATFORM

Enhancing outcomes across care settings, with real solutions for your evolving needs.



Seamless transition between care environments



Improved workflow



Standardized product quality



A single, trusted point-of-care for service



Innovative partnerships for the future

Hillrom offers solutions across a range of low, mid and high-acuity hospital environments to help improve patient safety, enhance outcomes, and optimize workflow.



ADVANCING CONNECTED CARE™



Smart Beds
& Surfaces



Safe Patient
Handling & Mobility



Patient
Monitoring



Care
Communications



SmartCare™
Services

References

1. The International Surgical Outcomes Study group. Global patient outcomes after elective surgery: prospective cohort study in 27 low-, middle- and high-income countries. *Br J Anaesth*. 2016 Nov; 117(5): 601–609.
2. Barbara J. Watson, Alan W. Salmoni, Aleksandra A. Zecevic. Falls in an acute care hospital as reported in the adverse event management system. *Journal of Hospital Administration* · April 2015
3. Barbara J. Watson, Alan W. Salmoni, Aleksandra A. Zecevic. Falls in an acute care hospital as reported in the adverse event management system. *Journal of Hospital Administration* · April 2016
4. HAls data: European Centre for Disease Prevention and Control. "Healthcare-associated infections – a threat to patient safety in Europe". Financial losses: WHO. "Health care-associated infections, Fact Sheet"
5. Graves N, Maiti R, Aloweni FAB, Yuh AS, Lo ZJ, Harding K. Pressure injuries among admissions to a hospital in the tropics. *Int Wound J*. 2020 Dec;17(6):1659-1668. doi: 10.1111/iwj.13448. Epub 2020 Jul 27. PMID: 32720433; PMCID: PMC7948553.
6. Banks M, Graves N, Bauer J, Ash S. The costs arising from pressure ulcers attributable to malnutrition. *Clinical Nutrition*. 2010;29:180-6.
7. Internal Hill-Rom study, 2017, comparing Accella vs. competitor bed without SlideGuard.
8. Aiken LH, Clarke SP, Sloane DM, Sochalski JA, Busse R, Clarke H, et al. Nurses' reports on hospital care in five countries. *Health Aff*. 2001;20(3):43–53.
9. Linda H Aiken & al., Patient safety, satisfaction, and quality of hospital care: cross sectional surveys of nurses and patients in 12 countries in Europe and the United States - *BMJ*. 2012; 344: e1717
10. Linda H Aiken & al., Patient safety, satisfaction, and quality of hospital care: cross sectional surveys of nurses and patients in 12 countries in Europe and the United States - *BMJ*. 2012; 344: e1718
11. Esmita Charani et al. Lack of weight recording in patients being administered narrow therapeutic index antibiotics: a prospective cross-sectional study. *BMJ* 2014
12. Falvey, Jason R et al. "Rethinking Hospital-Associated Deconditioning: Proposed Paradigm Shift." *Physical therapy* vol. 95,9 (2015): 1307-15. doi:10.2522/ptj.20140511
13. Johanna I Westbrook & al., "How much time do nurses have for patients? A longitudinal study of hospital nurses' patterns of task time distribution and interactions with other health professionals" - November 2011 *BMC Health Services Research* 11(1):319

Baxter

**For more information, please contact your local distributor,
Baxter sales representative**

Baxter.com

Baxter reserves the right to make changes without notice in design, specifications and models. The only warranty Hill-Rom makes is the express written warranty extended on the sale or rental of its products.

The Baxter 900 Accella bed is intended for use in intensive, acute and ambulatory care settings for patients with a weight \geq 40 kg, height \geq 146 cm and BMI \geq 17. Medical device (93/42/EEC): Class I, Weigh system (2014/31/EEC): Class III, Manufacturer: Hill-Rom S.A.S. – BP 14 ZI du Talhouët 56330 Pluvigner France This medical device is a regulated health product which, pursuant to such regulation bears a CE mark. Hill-Rom recommends that you carefully read the detailed instructions for safe and proper use included in the documents accompanying the medical devices. The personnel of healthcare establishments are responsible for the proper use and maintenance of these medical devices.

Accella, Baxter and slideguard are trademarks of Baxter International Inc. or its subsidiaries.

ALL RIGHTS RESERVED. APR165901-EN-EMEA-R1 1-DEC-2020 ENGLISH – EMEA

Baxter Healthcare (Asia) Pte Ltd 150 Beach Road #30-01/88 Gateway West Singapore 189720 AP-CS157-240002 EN APAC 08APR24